



**CHARGE**



## TOWN HALL MEETING #4

June 30, 2020

- Current Status
  - Mid-year update
  - Survey Results
  - Program Updates
- Covid Update
  - Covid status statewide
  - Phase II/III Building Re-occupancy Plan
- Community Outreach
  - CKFF & 4K
  - #ChargeCares
- Mental and physical well-being
- Questions and answers



A blue-tinted photograph of a construction site. In the center, a large, square concrete manhole cover is being lowered into a deep trench by a crane. Two workers in hard hats and safety vests are guiding the cover. To the left, another worker stands near a pile of pipes. To the right, a worker is visible near a wooden frame. The background shows a residential street with houses and trees.

**CURRENT STATUS**

***CHARGE***

## Mid-Year Updates

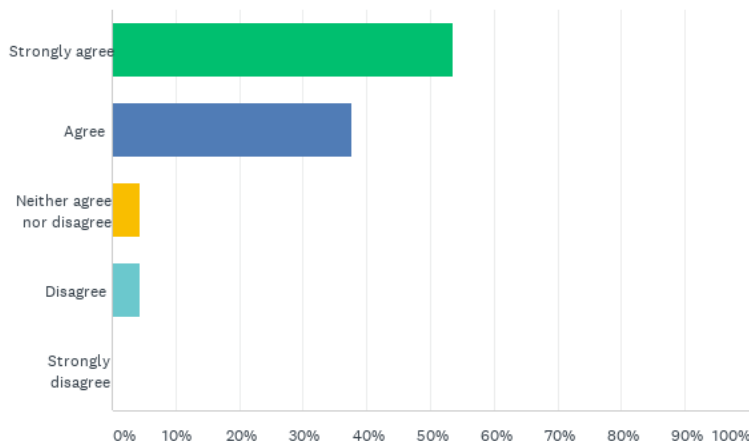
- Financial strength and flexibility
- Current initiatives
  - Intern program
  - HCSS
- PG&E Bankruptcy
- Cultural Values Assessment – the WHY
  - Partnering
  - Communities
  - Thrive



## Survey Results

- Townhall meetings are beneficial – 58% strongly agree and 36% Agree
- Townhall meetings held monthly – 57%

Q9 I am able to get questions answered, or find the right people to ask, when needed.



## Project/Program Updates

- Work highlights through first 6 months
  - 25K LF of pipe for VPC
  - Built new bore truck and added mid-size bore rig (total of 13)
  - Partnered with PSC on multiple PG&E projects
  - Engineering bores, procuring work and constructing for So Cal Gas
  - Performed work for 20+ different companies outside of PG&E
- Current projects
  - Saint Francis Electric Job (Days and Nights) – 3 bore rigs
  - 12" steel in Calistoga for PSC
  - 12" steel in Berkeley for PG&E
  - 4" main and services for Michels
- Next 6 months
  - 21K LF for PG&E in Merced
  - 15K LF for Henkels & McCoy
  - Rock bore in Grass Valley for Summit Line Construction
  - Comm and street lighting for Saint Francis Electric



## Project/Program Updates – VPC North

- Highlights through first 6 months
  - Aldyl-A, Copper and MHP projects
  - 8-week training schedule
  - New business traffic control and restoration
- Current projects
  - Aldyl-A
  - MHP – Sacramento / Butte Rebuild
  - Copper Services
- Next 6 months
  - On track to have our biggest year ever in Aldyl-A, 60,000 LF and 1200+ services
  - Butte Rebuild and MHP – 17,000 LF of trench and 400+ services
  - Copper Services



## Project/Program Updates – VPC South

- Highlights through first 6 months
  - Started our first joint MHP with PG&E and So Cal Gas
- Current projects
  - Saint Marie MHP soon to be complete
  - Pilot project in L.A.
- Next 6 months
  - Complete pilot project in L.A.
    - Get added to bidders list for So Cal Gas
  - MHP RFP
  - Secure backlog for Q4 and 2021



## Project/Program Updates – VPI

- Work highlights through first 6 months
  - Completed 2 fire hardening projects (Santa Rosa and Oakland)
  - Mt Diablo Pole Replacement Project
  - 2 Electric Vehicle projects in Redwood City
  - Emergency work
- Current projects
  - Woodland Capacity project – awaiting permits
  - 2 large 56A projects
  - 4-56C projects in construction
- Next 6 months
  - EV Fleet and EVCN
  - Arcata cable undergrounding
  - Moraga 1102 Undergrounding
  - 22 additional 56C projects
  - Compliance Tags



## Project/Program Updates – Engineering

- Work highlights through first 6 months
  - 420 copper estimating jobs submitted
  - Completed design of 4 MHPs
- Current projects
  - Continue work on Butte County parks to accelerate construction
  - New business design
  - Poles / EC tags
- Next 6 months
  - Non-Butte County MHP planning and design for 2021
  - Finalize Rule 20 designs for Bonanza and Doherty
  - Position for 2021 Copper estimating
  - Pursue engineering work in Southern California

# CHARGE



## Project/Program Updates – Summary

It's going to be a  
busy final 6 months  
of the year

# COVID UPDATES



**CHARGE**

## Covid-19 Update

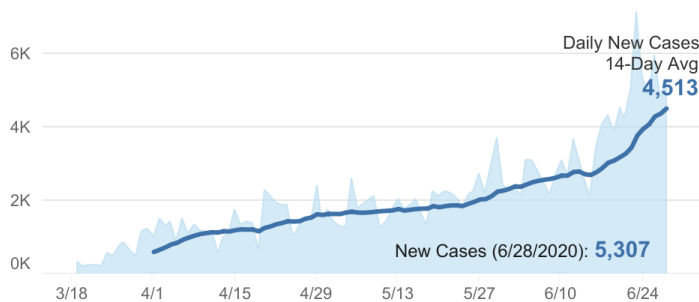
- Re-opening paused in many areas
- Cases are increasing
- Continuing to monitor case count

**216,550**

Positive Cases

**+5,307** New Cases

**+2.5%** Increase

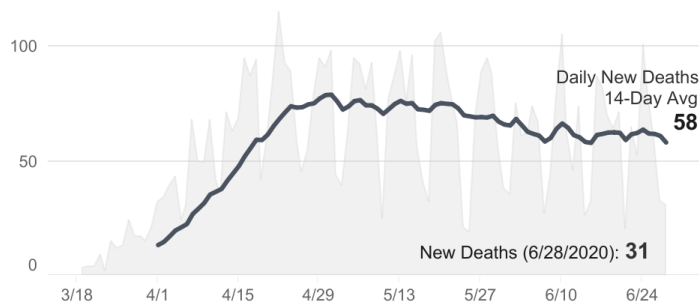


**5,936**

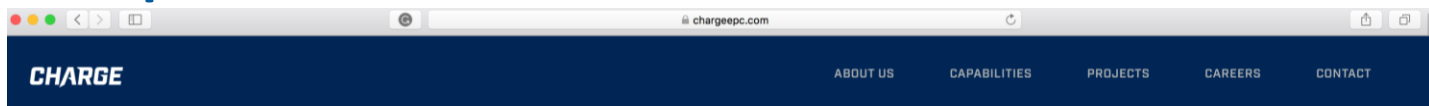
Total Deaths

**+31** New Deaths

**+0.5%** Increase



# Covid-19 Update



## COVID-19 RESOURCES

During this unprecedented time for our company and our communities, we want you to know we are here to offer our full support.

### Submit Your Covid-19 Questions

Fill out the form below to submit any questions or concerns related to the Covid-19 pandemic, and how we at Charge are monitoring and handling the situation.

Please respond to my question or concern:

- ☐ Anonymously via company-wide emails  
☐ Directly via email or phone

Subject

Enter your question or comment

Submit

### Related Resources

We have assembled this collection of documents in a central location for your convenience. Click the link to view and download the PDF resource.

**#chargecares** – Charge employees are coming together to raise money for those impacted by Covid-19. The funds will be used in two ways: Send gifts to health care workers as a thank you for their service and sacrifice, and provide grocery store gift cards to families impacted by the pandemic. Learn more about Charge Cares and how to donate or nominate a family at [chargeEPC.com/charge-cares](https://chargeEPC.com/charge-cares)

06/01/20

[Employee Survey: Charge Pandemic Response](#)

03/23/20

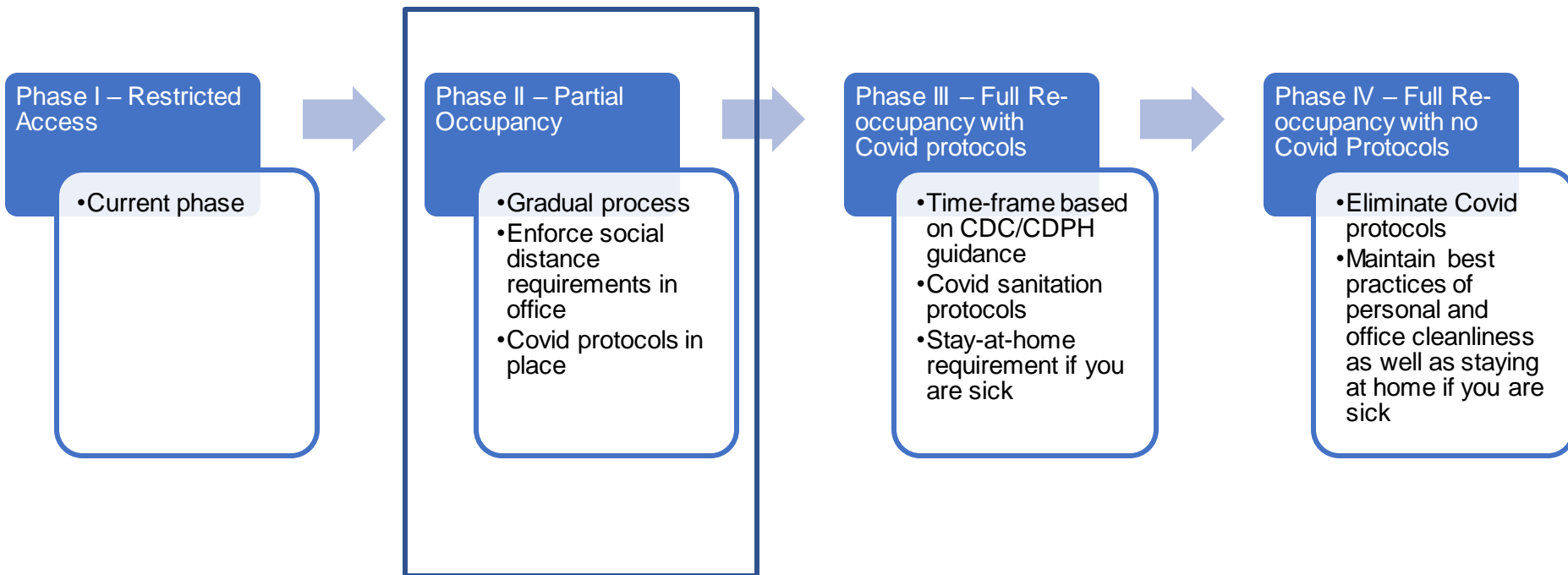
[Safety Newsletter](#)

[CDC – Coronavirus Information](#)

[CA EDD – Coronavirus & Employment Information](#)

[FFCRA – Employee Rights](#)

[HBR – That Discomfort You're Feeling Is Grief](#)

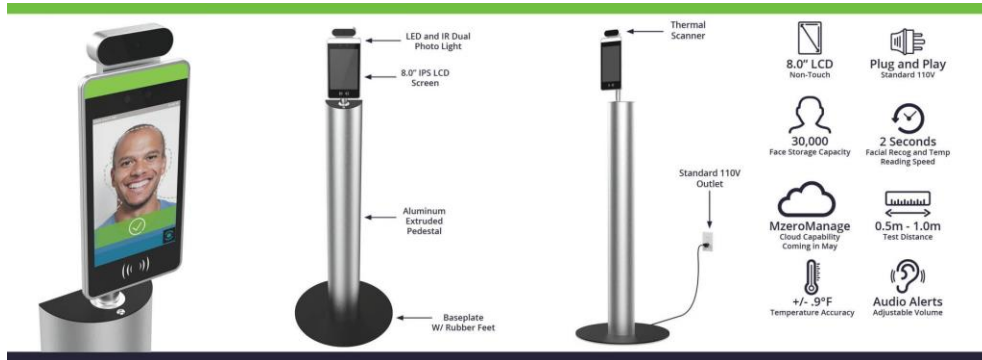
*Phase Plan*

## CHARGE

For the week starting: May 11th, 2020

[illegible]

## Employee and Visitor Screening



- Installing kiosk system at front counter (awaiting delivery)
- Sign-in sheet at front desk area



## Personal Responsibilities

- Wear mask when in common areas or if 2 or more people are in the cubicle areas
- Sanitize all common surfaces before and after use
- Sanitize work surfaces prior to beginning work with spray bottles deployed throughout the office area
- Maintain proper social distancing when in the office or yard
  - Say something if you see people not complying
- Wash your hands frequently and cover coughs/sneezes
- Don't carpool
- Prescreen yourself before coming to work



### Feeling Sick?

**Stay home when you are sick!**

If you feel unwell or have the following symptoms  
**please leave the building and contact your health care provider.**  
Then follow-up with your supervisor.

**DO NOT ENTER if you have:**



**FEVER**



**COUGH**



**SHORTNESS OF  
BREATH**

A blue-tinted photograph of four construction workers wearing hard hats and safety vests. They are gathered around a set of plans on a construction site. In the background, there is a backhoe loader with 'obcat' written on its side, a traffic cone, and some residential buildings on a hill.

# COMMUNITY OUTREACH

***CHARGE***

## VIRTUAL 4K & CKFF

- CKFF event – Saturday, October 3
- Virtual 4K – July 3-5
  - Post a picture of yourself or your group. Don't forget to use the hashtags #july4Kchallenge #peopleofcharge #AimHighwithCharge
- Register for FREE to participate in the virtual run *and* peer fundraiser at <http://aimhighwithcharge.com/>
- Do not need to participate in the fundraiser in order to complete the 4K – notify Frank O'Connell that you plan to participate

4TH ANNUAL CLAY SPORTING SHOOT BENEFIT



# Aim High

WITH **CHARGE** IN 2020

A Fundraiser for the  
Chris Kyle Frog Foundation



Register or donate to support those who  
serve our country and communities  
at [www.AimHighwithCharge.com](http://www.AimHighwithCharge.com)


**Oct 3  
2020**

COYOTE VALLEY SPORTING CLAYS  
7:30 AM | MORBAN HILL, CA

[AimHighwithCharge.com](http://AimHighwithCharge.com)

## #CHARGECARES

- Raised over \$5650 to date – helped 9 families and 9 organizations
- Balloon blast: \$20 for 5 water balloons
- Status update:
  - \$1700 raised so far = 425 water balloons
- 2 more fundraisers planned for this year
- Planning spring event for 1-year anniversary
- If interested in volunteering, contact Charge Cares
- Website: [chargeepc.com/charge-cares](http://chargeepc.com/charge-cares)
- Non-profit status
- Payroll Deduction



CHARGE CARES PRESENTS

# WATER BALLOON BLAST

8.06.2020 **BENICIA YARD + FACEBOOK LIVE** 5 PM

**A FUNDRAISER THAT  
AIMS TO SOAK MIKE &  
BILLY FOR A GOOD  
CAUSE!**



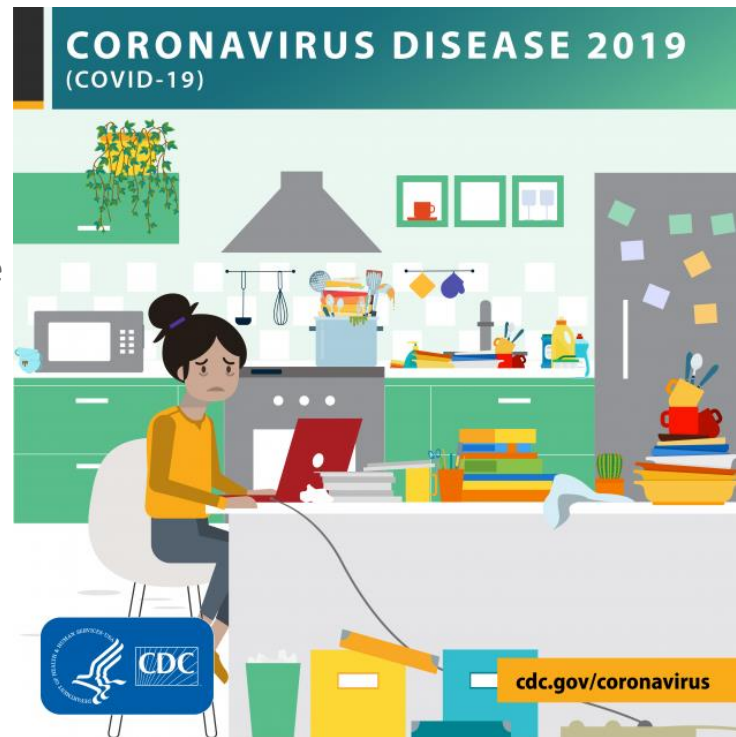


# MENTAL AND PHYSICAL WELL-BEING

***CHARGE***

## Take care of yourself

- Anxiety, uneasiness, uncertainty are common feelings
- Human bodies natural reaction to stress
  - Perceive a threat, natural tendency is to fight or escape
  - Heightened state for months
- What to do:
  - Take care of your emotional health
  - Take breaks from the news
  - Take care of your body
    - Deep breaths, stretching, meditate
    - Eat healthy
    - Exercise regularly
    - Get plenty of sleep
  - Avoid excessive alcohol or cigarettes
  - Take time to unwind
  - Connect with others
  - Watch Spring Training 2.0 and prepare to root for the Dodgers



# QUESTIONS?

**CHARGE**